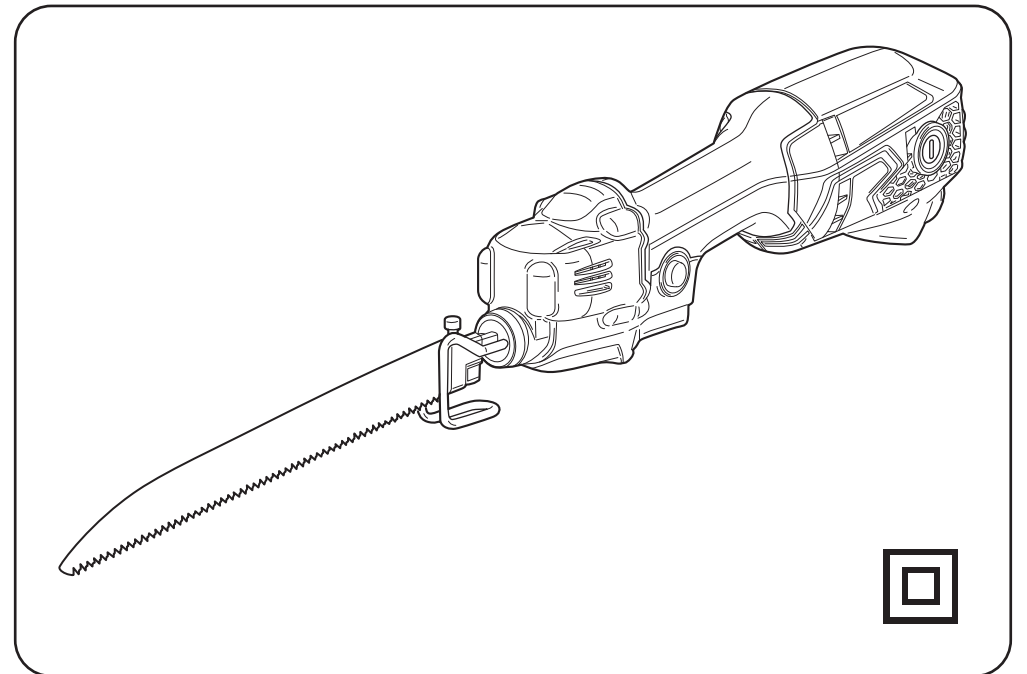
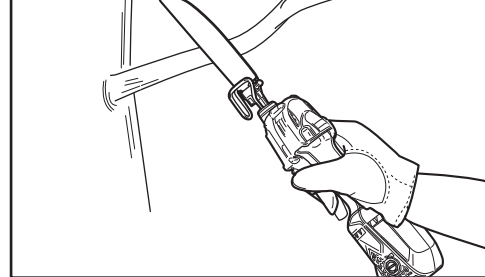
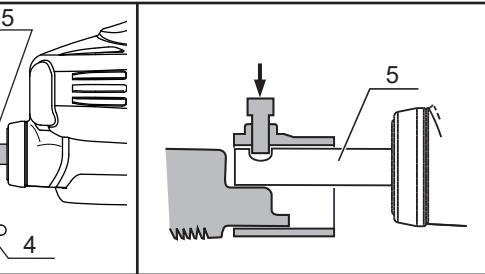
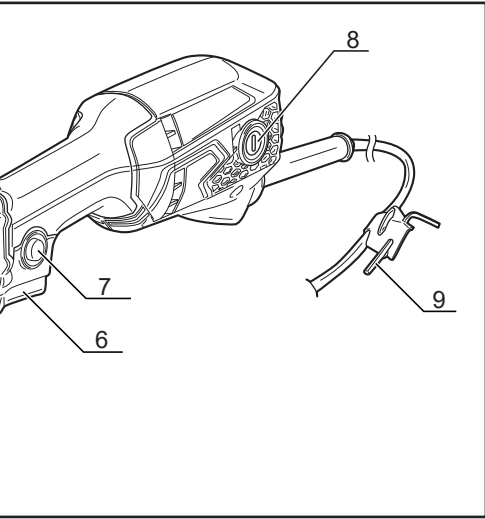
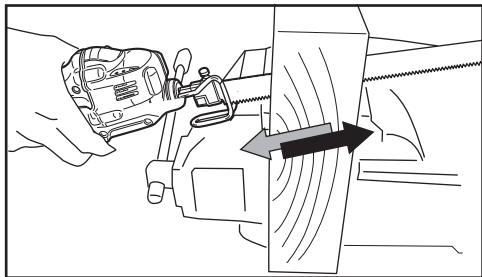
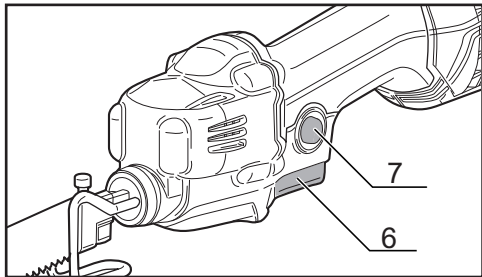
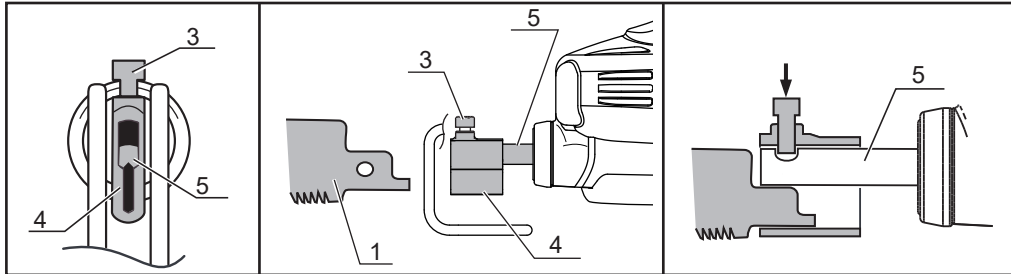
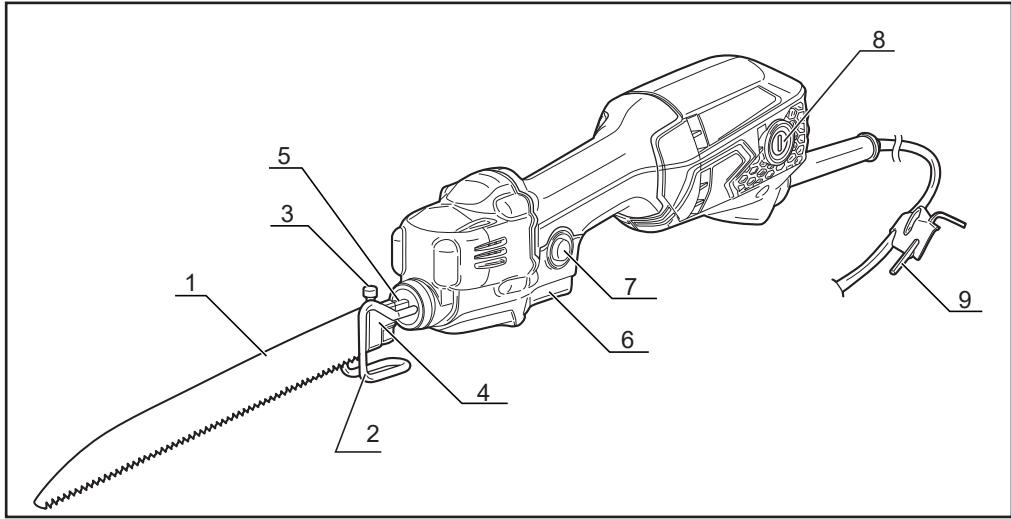


ARJK110

GB OWNER'S OPERATING MANUAL

KYOCERA Industrial Tools Corporation
2-2-54 Matsuhama-cho, Fukuyama-shi,
Hiroshima-ken, 720-0802 Japan





THANK YOU FOR BUYING OUR PRODUCT.
To ensure your safety and satisfaction, carefully read through this OWNER'S MANUAL before using the product.

General power tool safety warnings

WARNING Read all safety warnings, instructions, illustrations and specifications provided with this power tool. Failure to follow all instructions listed below may result in electric shock, fire and/or serious injury.

Save all warnings and instructions for future reference.

The term "power tool" in the warnings refers to your mains-operated (corded) power tool or battery-operated (cordless) power tool.

1) Work area safety

- a) **Keep work area clean and well lit.** Cluttered or dark areas invite accidents.
- b) **Do not operate power tools in explosive atmospheres,** such as in the presence of flammable liquids, gases or dust. Power tools create sparks which may ignite the dust or fumes.
- c) **Keep children and bystanders away while operating a power tool.** Distractions can cause you to lose control.

2) Electrical safety

- a) **Power tool plugs must match the outlet. Never modify the plug in any way. Do not use any adapter plugs with earthed (grounded) power tools.** Unmodified plugs and matching outlets will reduce risk of electric shock.
- b) **Avoid body contact with earthed or grounded surfaces,** such as pipes, radiators, ranges and refrigerators. There is an increased risk of electric shock if your body is earthed or grounded.
- c) **Do not expose power tools to rain or wet conditions.** Water entering a power tool will increase the risk of electric shock.
- d) **Do not abuse the cord. Never use the cord for carrying, pulling or unplugging the power tool. Keep cord away from heat, oil, sharp edges or moving parts.** Damaged or entangled cords increase the risk of electric shock.
- e) **When operating a power tool outdoors, use an extension cord suitable for outdoor use.** Use of a cord suitable for outdoor use reduces the risk of electric shock.
- f) **If operating a power tool in a damp location is unavoidable, use a residual current device (RCD) protected supply.** Use of an RCD reduces the risk of electric shock.

3) Personal safety

- a) **Stay alert, watch what you are doing and use common sense when operating a power tool. Do not use a power tool while you are tired or under the influence of drugs, alcohol or medication.** A moment of inattention while operating power tools may result in serious personal injury.
- b) **Use personal protective equipment. Always wear eye protection.** Protective equipment such as a dust mask, non-skid safety shoes, hard hat or hearing protection used for appropriate conditions will reduce personal injuries.
- c) **Prevent unintentional starting. Ensure the switch is in the off-position before connecting to power source and/or battery pack, picking up or carrying the tool.** Carrying power tools with your finger on the switch or energising power tools that have the switch on invites accidents.

- d) **Remove any adjusting key or wrench before turning the power tool on.** A wrench or a key left attached to a rotating part of the power tool may result in personal injury.
- e) **Do not overreach. Keep proper footing and balance at all times.** This enables better control of the power tool in unexpected situations.
- f) **Dress properly. Do not wear loose clothing or jewellery. Keep your hair and clothing away from moving parts.** Loose clothes, jewellery or long hair can be caught in moving parts.
- g) **If devices are provided for the connection of dust extraction and collection facilities, ensure these are connected and properly used.** Use of dust collection can reduce dust-related hazards.
- h) **Do not let familiarity gained from frequent use of tools allow you to become complacent and ignore tool safety principles.** A careless action can cause severe injury within a fraction of a second.

4) Power tool use and care

- a) **Do not force the power tool. Use the correct power tool for your application.** The correct power tool will do the job better and safer at the rate for which it was designed.
- b) **Do not use the power tool if the switch does not turn it on and off.** Any power tool that cannot be controlled with the switch is dangerous and must be repaired.
- c) **Disconnect the plug from the power source and/or remove the battery pack, if detachable, from the power tool before making any adjustments, changing accessories, or storing power tools.** Such preventive safety measures reduce the risk of starting the power tool accidentally.
- d) **Store idle power tools out of the reach of children and do not allow persons unfamiliar with the power tool or these instructions to operate the power tool.** Power tools are dangerous in the hands of untrained users.
- e) **Maintain power tools and accessories. Check for misalignment or binding of moving parts, breakage of parts and any other condition that may affect the power tool's operation. If damaged, have the power tool repaired before use.** Many accidents are caused by poorly maintained power tools.
- f) **Keep cutting tools sharp and clean.** Properly maintained cutting tools with sharp cutting edges are less likely to bind and are easier to control.
- g) **Use the power tool, accessories and tool bits etc. in accordance with these instructions, taking into account the working conditions and the work to be performed.** Use of the power tool for operations different from those intended could result in a hazardous situation.
- h) **Keep handles and grasping surfaces dry, clean and free from oil and grease.** Slippery handles and grasping surfaces do not allow for safe handling and control of the tool in unexpected situations.

5) Service

- a) **Have your power tool serviced by a qualified repair person using only identical replacement parts.** This will ensure that the safety of the power tool is maintained.

Safety instructions for reciprocating saws

- a) **Hold the power tool by insulated gripping surfaces, when performing an operation where the cutting accessory may contact hidden wiring or its own cord.** Cutting accessory contacting a "live" wire may make exposed metal parts of the power tool "live" and could give the operator an electric shock.
- b) **Use clamps or another practical way to secure and support the workpiece to a stable platform.** Holding the workpiece by hand or against your body leaves it unstable and may lead to loss of control.

INSTRUCTIONS FOR SAFE HANDLING

- 1. Make sure that the tool is only connected to the voltage marked on the name plate.
- 2. Never use the tool if its cover or any bolts are missing. If the cover or bolts have been removed, replace them prior to use. Maintain all parts in good working order.
- 3. Always secure tools when working in elevated positions.
- 4. Never touch the blade, drill bit, grinding wheel or other moving parts during use.
- 5. Never start a tool when its rotating component is in contact with the work piece.
- 6. Never lay a tool down before its moving parts have come to a complete stop.
- 7. **ACCESSORIES :** The use of accessories or attachments other than those recommended in this manual might present a hazard.
- 8. **REPLACEMENT PARTS :** When servicing use only identical replacement parts.

DESCRIPTION

- 1. Saw blade
- 2. Work holder
- 3. Hex. head bolt
- 4. Blade holder
- 5. Blade arbor
- 6. Switch
- 7. Lock button
- 8. Carbon brush cap
- 9. Hex. wrench key

SPECIFICATIONS

Stroke speed	0 - 5,000 min ⁻¹
Stroke length	10mm
Max. cutting capacity	
Wood	55mm
Mild steel	3.5mm
Plastic pipe	120mm
Dimensions	337 x 71 x 112 mm
Weight	1.4kg

* Be sure to check the nameplate on the product, because the voltage is subject to change depending on the area in which the product is to be used.

STANDARD ACCESSORIES

Saw blade, Hex. wrench key

APPLICATIONS

(Use only for the purposes listed below.)

- 1. Cutting wood, aluminium, steel plate, iron pipe
- 2. Pruning

INSTALLING AND REMOVING BLADE (Fig. 1)

Selecting the correct type of blade is important in order to obtain the best performance from the saw. Select the blade based on the application and on the material you wish to cut.

- 1. Insert the saw blade into the slot of the blade holder (4) and blade arbor (5) until it is fully seated.
- 2. Align the tips of the blade holder and blade arbor, and fasten the hex head bolt with hex wrench. The hex head bolt must be seated in the recess on the blade arbor. Pull the saw blade few times to make sure the blade is securely fixed.
- 3. To remove, loosen the hex head bolt and pull out the saw blade.

Note: To install jigsaw blade, the blade holder must be replaced with the jigsaw blade holder (option).

INSTALLABLE BLADE

Dimensions of reciprocating saw blade

mm			
(t)	(b)	(t)	(b)
0.6	12.3 ~ 12.9	1.3	11.8 ~ 12.3
0.7	12.2 ~ 12.8	1.4	11.7 ~ 12.2
0.8	12.2 ~ 12.7	1.5	11.6 ~ 12.2
0.9	12.1 ~ 12.6	1.6	11.5 ~ 12.1
1.0	12.0 ~ 12.6	1.7	11.4 ~ 12.0
1.1	11.9 ~ 12.5	1.8	11.3 ~ 11.9
1.2	11.8 ~ 12.4		

Shank type of jigsaw blade

Standard TYPE	B TYPE

SWITCH (Fig. 2)

This tool is started and stopped by depressing and releasing the switch (6). For continuous operation, press the lock button (7) while switch is depressed. Depress again to release the lock.

The saw stroke speed is variable from 0 through 5,000min⁻¹ by controlling the trigger-squeezing force.

OPERATION (Fig. 3, 4)

Secure the workpiece to a work bench or table with a vise or with clamp.

Mark the line of cut clearly.

Make sure the saw blade is clear of any foreign material and that the power cord and extension cord are out of the blade path.

Hold the saw firmly in front of and clearly away from you.

NOTE: The barrel-style grip of this saw is designed for one-handed use only.

Keep your other hand away from the saw and the cutting area of the workpiece.

Depress the switch trigger to start the cutting action. Move the blade into the workpiece, and move the tool back and forth.

NOTE: Do not force. Use only enough pressure to keep the saw cutting. Let the blade and saw do the work. Keep pressure on the base, against the workpiece.

MAINTENANCE

After use, check the tool to make sure that it is in top condition.

It is recommended that you take this tool to an Authorized Service Center for a thorough cleaning and lubrication at least once a year.

DO NOT MAKE ANY ADJUSTMENTS WHILE THE MOTOR IS IN MOTION.

ALWAYS DISCONNECT THE POWER CORD FROM THE RECEPTACLE BEFORE CHANGING REMOVABLE OR EXPENDABLE PARTS (BLADE, BIT, SANDING PAPER ETC.), LUBRICATING OR WORKING ON THE UNIT.

WARNING!

To ensure safety and reliability, all repairs should be performed by an AUTHORIZED SERVICE CENTER or other QUALIFIED SERVICE ORGANIZATION.

SAVE THESE INSTRUCTIONS FOR FUTURE REFERENCE.

WARNING To reduce the risk of injury, user must read instruction manual "

Class II construction tool in which protection against electric shock does not rely on basic insulation only, but in which additional safety precaution, such as double insulation or reinforced insulation, are provided.