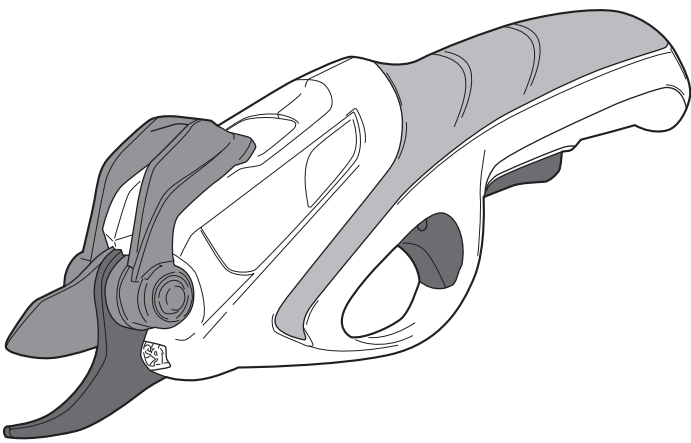


BSH-120

OWNER'S OPERATING MANUAL

KYOCERA Industrial Tools Corporation
2-2-54 Matsuhama-cho, Fukuyama-shi,
Hiroshima-ken, 720-0802 Japan



69801280-00 STD
08-22

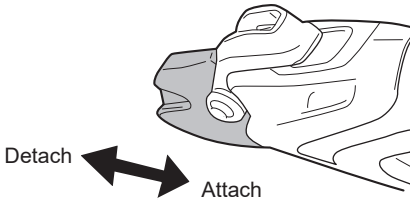
ENGLISH

5. ATTACHING BLADE GUARD

WARNING: Make sure that the pruner is OFF. Keep hands away from the switches while servicing the blades. Align the teeth on the blade with the grooves in the blade guard. Then attach the guard by sliding the blade into the blade guard.

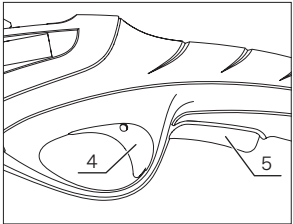
6. DETACHING BLADE GUARD

WARNING: Make sure that the pruner is OFF. Keep hands away from the switches while servicing the blades. Pull the blade guard out and remove it from the tool.



7. SWITCH ON/OFF

To turn on the pruner, depress the safety switch (5) and keep it depressed while squeezing the on/off trigger switch (4). To turn off the tool, release the on/off trigger switch.



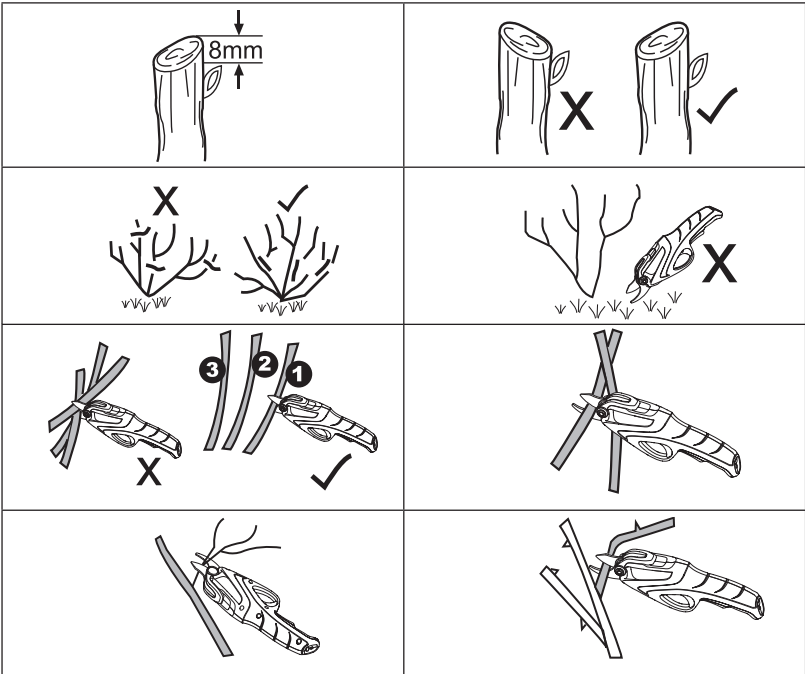
8. WORKLIGHT LED

The worklight LED will turn on when the safety switch is depressed. This provides additional lighting for operation in lower lit areas. The worklight LED will turn off when the safety switch is released.

ENGLISH

9. PRUNING TIPS

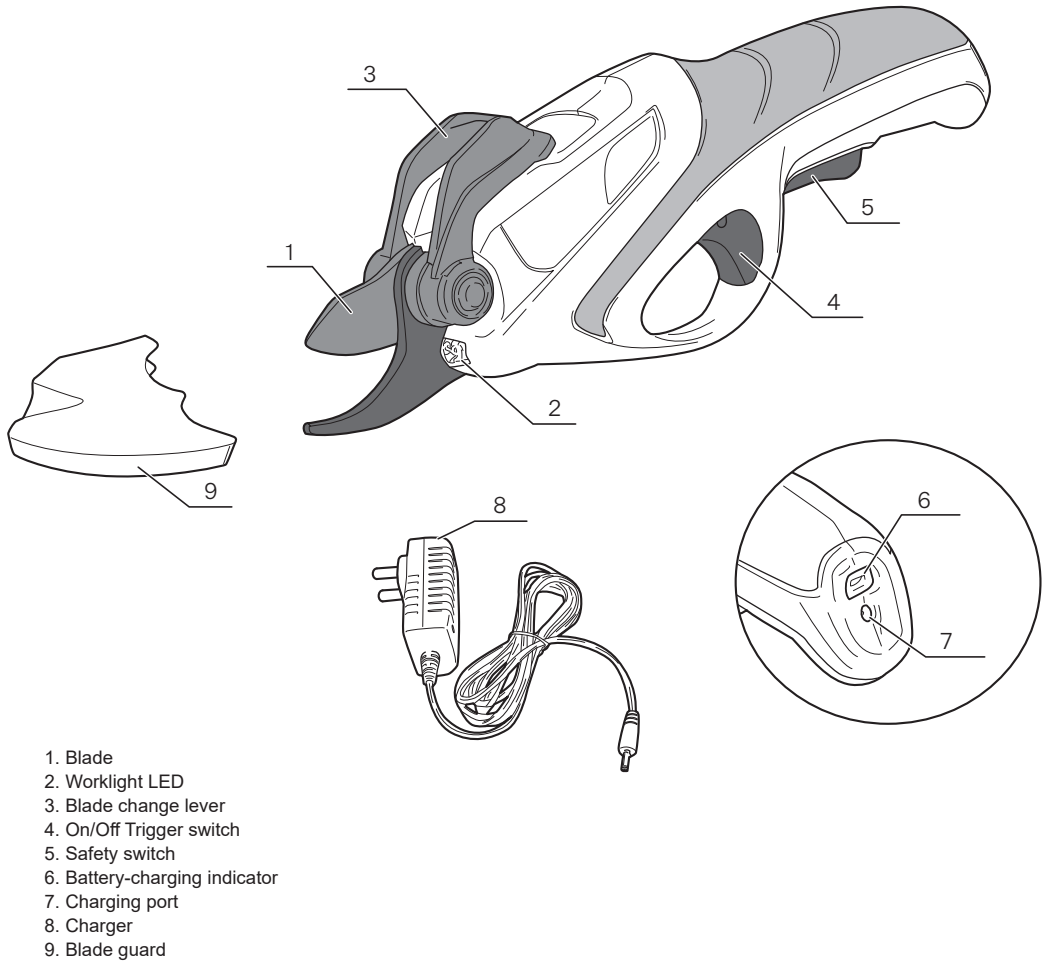
- WARNING:** Be sure to carefully read and follow the safety rules in this manual.
- WARNING:** Maintain proper footing and balance and do not overreach. Wear safety goggles, non-skid footwear and gloves when operating. Hold the tool firmly.
- WARNING:** Never operate the tool in an awkward posture. This may cause serious injury. Keep your free hand away from the cutting area. Never touch the blades: they are very sharp and you may cut yourself. Always wear protective gloves while pruning.
- Maximum cutting capacity is 12mm for green wood.
 - Never cut too close to the stem, so the wound can heal properly.
 - Always make the cut about 8mm from the bud.
 - The cut should slope away from the bud so the rain can run off.
 - If you remove an entire stem, cut back to the point where it branched.
 - Never push the blade of the pruner into the ground to cut suckers.
 - Cut branches one by one, as shown.
 - Use the pruner to remove overcrowds or crossing stems.
 - Use the pruner to remove thin or weak growth.
 - Use the pruner to remove dead, damaged and diseased branches.



THANK YOU FOR BUYING OUR PRODUCT.

To ensure your safety and satisfaction, carefully read through this OWNER'S MANUAL before using the product.

MAIN PARTS



- 1. Blade
- 2. Worklight LED
- 3. Blade change lever
- 4. On/Off Trigger switch
- 5. Safety switch
- 6. Battery-charging indicator
- 7. Charging port
- 8. Charger
- 9. Blade guard

SPECIFICATIONS

Battery type	3.6V 1,500mAh Li-ion (Built-in)
Max. cutting diameter	12mm ※ 1
Weight	0.6kg
Charger	
Output voltage	DC3.6V
Charging time	60min ※ 2

- ※1: Max. cutting diameter might change due to the kind of tree which you cut and condition of blade.
- ※2: Charging time may differ depending on surrounding temperature and the condition of batteries.

GENERAL SAFETY RULES

WARNING: Read all instructions. Failure to follow all instructions listed below may result in electric shock, fire and/or serious personal injury.

The term “power tool” in all of the warnings listed below refers to your mains operated (corded) power tool or battery operated (cordless) power tool.

- 1. Workplace**
 - 1) Keep workplace clean and well lit.** Cluttered and dark workplaces invite accidents.
 - 2) Do not operate power tools in explosive atmospheres, such as in the presence of flammable liquids, gases or dust.** Power tools create sparks which may ignite the dust or fumes.
 - 3) Keep children and bystanders away while operating a power tool.** Distractions can cause you to lose control.
- 2. Electrical safety**
 - 1) Power tool plugs must match the outlet. Never modify the plug in any way. Do not use any adapter plugs with earthed (grounded) power tools.** Unmodified plugs and matching outlets will reduce risk of electric shock.
 - 2) Avoid body contact with earthed or grounded surfaces such as conduits, radiators, and refrigerators.** There is an increased risk of electric shock if your body is earthed or grounded.
 - 3) Do not expose power tools to rain or wet conditions.** Water entering a power tool will increase the risk of electric shock.
 - 4) Do not abuse the cord. Never use the cord for carrying, pulling or unplugging the power tool. Keep cord away from heat oil, sharp edges or moving parts.** Damaged or entangled cords increase the risk of electric shock.
 - 5) When operating a power tool outdoors, use an extension cord suitable for outdoor use.** Use of a cord suitable for outdoor use reduces the risk of electric shock.

- 3. Personal safety**
 - 1) Stay alert, watch what you are doing and use common sense when operating a power tool. Do not use a power tool while you are tired or under the influence of drugs, alcohol or medication.** A moment of inattention while operating power tools may result in serious personal injury.
 - 2) Use safety equipment. Always wear eye protection.** Safety equipment such as dust mask, non-skid safety shoes, hard hat, or hearing protection used for appropriate conditions will reduce personal injuries.
 - 3) Avoid accidental starting. Ensure the switch is in the off position before plugging in.** When your finger on the switch or plugging in power tools that have the switch on invites accidents.
 - 4) Remove any adjusting key or wrench before turning the power tool on.** A wrench or a key left attached to a rotating part of the power tool may result in personal injury.
 - 5) Do not overreach. Keep proper footing and balance at all times.** This enables better control of the power tool in unexpected situations.
 - 6) Dress properly. Do not wear loose clothing or jewellery. Keep your hair, clothing and gloves away from moving parts.** Loose clothes, jewellery or long hair can be caught in moving parts.
 - 7) If devices are provided for the connection of dust extraction and collection facilities, ensure these are connected and properly used.** Use of these devices can reduce dust related hazards.
- 4. Power tool use and care**
 - 1) Do not force the power tool. Use the correct power tool for your application.** The correct power tool will do the job better and safer at the rate for which it was designed.
 - 2) Do not use the power tool if the switch does not turn it on and off.** Any power tool that cannot be controlled with the switch is dangerous and must be repaired.
 - 3) Disconnect the plug from the power source before making any adjustments, changing accessories, or storing power tools.** Such preventive safety measures reduce the risk of starting the power tool accidentally.
 - 4) Store idle power tools out of the reach of children and do not allow persons unfamiliar with the power tool or these instructions to operate the power tool.** Power tools are dangerous in the hands of untrained users.
 - 5) Maintain power tools. Check for misalignment or binding of moving parts, breakage of parts and any other condition that may affect the power tools operation. If damaged, have the power tool repaired before use.** Many accidents are caused by poorly maintained power tools.
 - 6) Keep cutting tools sharp and clean.** Properly maintained cutting tools with sharp cutting edges are less likely to bind and are easier to control.

- 7) Use the power tool, accessories and tool bits etc., in accordance with these instructions and in the manner intended for the particular type of power tool, taking into account the working conditions and the work to be performed.** Use of the power tool for operations different from those intended could result in a hazardous situation.

- 5. Battery tool use and care**
 - 1) Recharge only with the charger specified by the manufacturer.** A charger that is suitable for one type of battery pack may create a risk of fire when used with another battery pack.
 - 2) When tool is not in use, keep it away from other metal objects, like paper clips, coins, keys, nails, screws or other small metal objects that can make a connection from one terminal to another.** Shorting the battery terminals together may cause burns or a fire.
 - 3) Under abusive conditions, liquid may be ejected from the battery; avoid contact. If contact accidentally occurs, flush with water. If liquid contacts eyes, additionally seek medical help.** Liquid ejected from the battery may cause irritation or burns.

- 6. Service**
 - 1) Have your power tool serviced by a qualified repair person using only identical replacement parts.** This will ensure that the safety of the power tool is maintained.

- SAFETY RULES FOR BATTERY**
- 1. Do not open the battery.** There is a danger of short circuiting.
 - 2. Protect the battery against heat, e.g., against continuous sun irradiation and fire.** There is a danger of explosion.
 - 3. In case of damage and improper use of the battery, vapors may be emitted. Provide fresh air and seek medical help in case of illness.** The vapors can irritate the respiratory system.
 - 4. When the battery is defective, liquid can escape and come into contact with adjacent components. Check any parts concerned.** Clean such parts or replace them, if required.
 - 5. Only use our charger to charge the battery.** Use with other type of charger may result in a fire.
 - 6. Do not crush, drop or damage the tool. Do not use a tool or charger that has been dropped or received a sharp blow.** A damaged battery is subject to explosion. Properly dispose of a dropped or damaged battery immediately.
 - 7. Do not charge a battery tool in a damp or wet location.** Following this rule will reduce the risk of electric shock.

- SAFETY RULES FOR CHARGER**
- 1. Protect the battery charger from rain and moisture.** Water penetration in a battery charger increases the risk of electric shock.
 - 2. Do not charge other batteries.** The battery charger is suitable only for charging our lithium-ion batteries within the listed voltage range. Otherwise there is a danger of fire and explosion.
 - 3. Keep the battery charger clean.** Contamination may increase the risk of electric shock.
 - 4. Before using, always check the charger, cable and plug. If defects are detected, do not use the charger; never open the charger. Instead, have it opened and repaired only by qualified personnel who will use original spare parts.** Damaged chargers, cables and plugs increase the risk of electric shock.
 - 5. Do not operate the charger on easily inflammable surface (e.g. paper, textiles, etc.) or combustible surroundings.** The heat of the charger during charging may cause a fire.
 - 6. Plug the charger within the listed voltage range on the charger.**
 - 7. Unplug the charger from the electrical outlet before attempting any maintenance or cleaning to reduce the risk of electric shock.**
 - 8. Disconnect charger from the power supply when not in use.** This will reduce the risk of electric shock or damage to the charger if metal items should fall into the opening.
 - 9. To reduce the risk of electric shock. Do not touch the uninsulated portion of output connector or uninsulated battery terminal.**

- OPERATION**
- 1. BATTERY CHARGING**

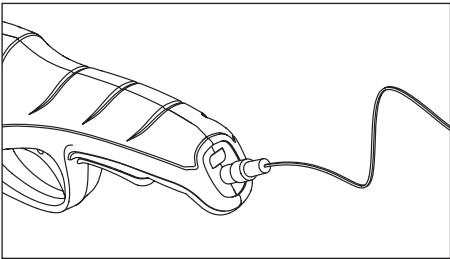
The battery in your new tool is not fully charged! First, read the safety rules, and then follow the instructions in the sections entitled “Important charging notes” and “Charging the battery”.
 - 2. IMPORTANT CHARGING NOTES**
 - Longest life and best performance can be obtained if the battery is charged at normal room temperature.
 - While charging, the charger will normally become warm.
 - If the battery is not charged properly, verify the current at the outlet by plugging in a lamp or other tool.
 - The tool should be recharged when it fails to produce sufficient power on jobs that were previously done easily. Do not continue to use the tool under these conditions. Repeat the charging procedure.
 - Unplug the charger from the power supply before disconnecting it from the tool. Unplug the charger before attempting to clean.
 - Battery life depends on usage, storage temperature and using time.
 - The charger is intended to be used in a vertical or floor-mounted position.

- 3. CHARGING THE BATTERY**

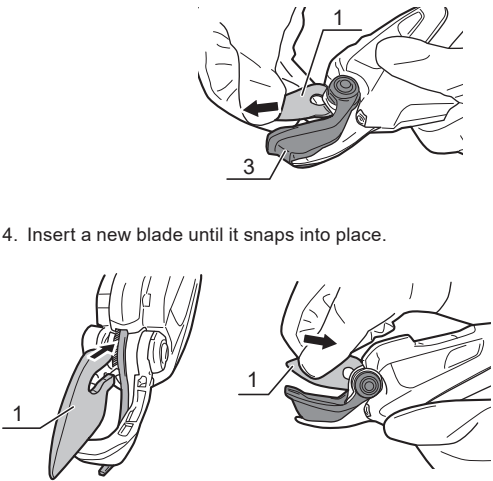
The battery charger provided matches with the Lithium-ion battery installed in the tool. Do not use any other battery charger.

The Lithium-ion battery is protected against deep discharging. When the battery is empty, a protective circuit turns the tool off and the blade no longer moves.

 - Attach the charger cord to the charging port.
 - Plug the charger into any 220-240V, 50/60Hz outlet. Your tool is now charging; the charging indicator will shine red.
 - The battery is fully charged as soon as the battery charge indicator shines green.
 - When recharging a fully depleted battery, the tool will require approximately 60 min to reach full capacity. The tool will not overcharge, and can remain attached to the charger indefinitely while not in use throughout the cutting session. Continuous charging may shorten overall battery life slightly, but it will not diminish the running time per charge.



- 3. Pull the blade out and remove it from the tool.**

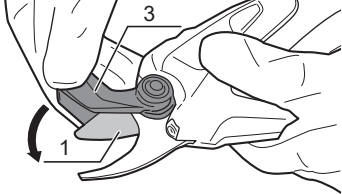


- 4. CHANGING THE BLADE**

WARNING: Keep hands away from switches while changing the blade. Otherwise, it can start accidentally and cause a personal injury.

WARNING: Before attaching or removing the blade, protect your hand with gloves or waste cloth. It cause a personal injury if touch the blade carelessly.

- 1. Ensure the blades are fully opened.**
- 2. Pull the blade change lever up until it stops.**



- 4. Insert a new blade until it snaps into place.**
- 5. Pull the blade change lever down.**

