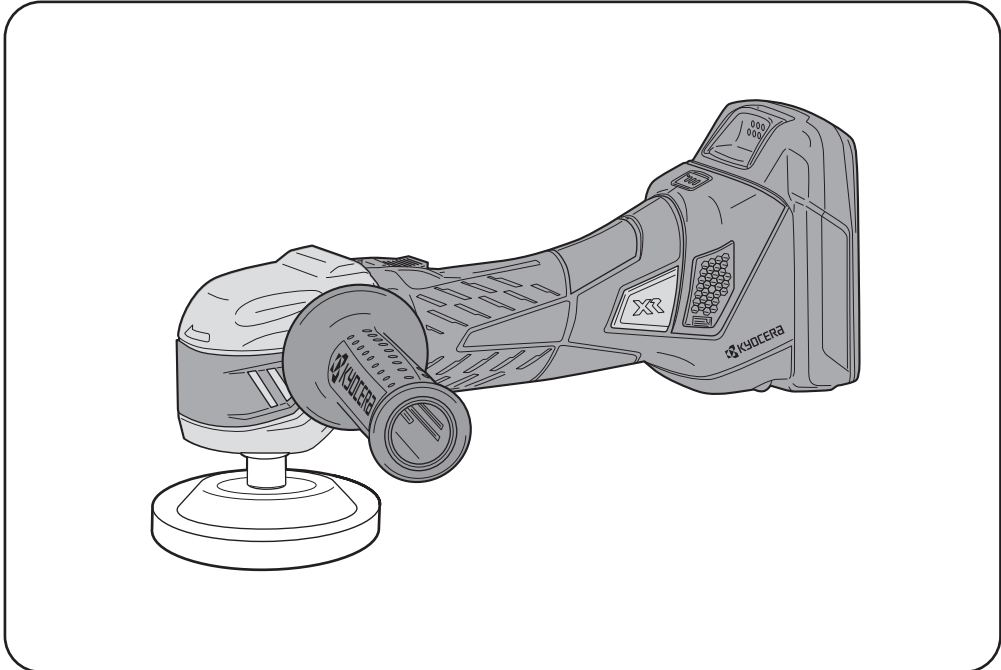


DPE11XR

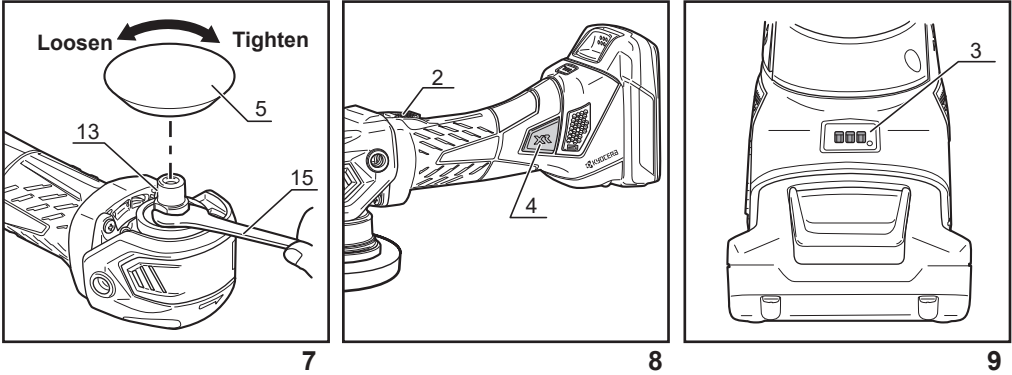
OWNER'S OPERATING MANUAL

KYOCERA Industrial Tools Corporation
2-2-54 Matsuhama-cho, Fukuyama-shi,
Hiroshima-ken, 720-0802 Japan



69801407-00 STD
03-23

ENGLISH



HOW TO CHARGE (Fig. 3)
The charger (9) may become a little warm while charging, but this does not affect its performance.
The charging condition is indicated by the flashing lamps on the charger (UBC-1802L). (Fig.3, Table 1)
1. Insert the electric plug of the charger into the outlet.
2. Firmly insert the battery pack (8) into the charger.
3. When the charging is complete, remove the battery pack from the charger (9).
4. Remove the electric plug of the charger from the outlet.
Note1: Lithium ion batteries can be charged when the battery packs are between 0°C and 40°C, but the charging time will be longer if the battery pack temperature is lower than 10°C.
Note2: The charging time will be longer when the battery level is low.

HOW TO EXTEND THE LIFE OF THE BATTERY PACK
Do not recharge a fully charged battery pack.
When the battery pack is not going to be used for an extended period of time (6 months or longer), store it with the battery fully charged.
Before storing the battery pack, remove it from the charger.

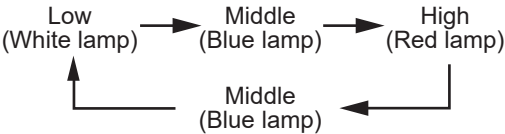
AUXILIARY HANDLE (Fig.4)
The auxiliary handle (1) can be attached to either side of the gear case (12).
ATTACHING THE ACCESSORIES (Fig. 5)
WARNING!
Always remove the battery before attaching and removing the optional accessory (6 or 7).
Attach the optional accessory (6 or 7) so that it can be positioned at the center of pad.

SWITCH (Fig. 6)
This tool has a slide switch.
This tool is started and stopped by sliding and releasing the switch.
For continuous operation, press the rear end down, then slide the switch along and press the front end down to lock it. To release the lock, press the rear end of the switch.
WARNING!
Prevent unintentional starting. Do not insert the battery with the switch in the ON position.



When battery level indicator is flashing, the battery protection is working. (Please read "BATTERY PROTECTION")
Turn the switch off and on again, and the tool will restart.
When turning the switch rapidly under battery protection, the tool would still not work. However, it is not a malfunction.
CHANGING THE RUBBER PAD (Fig.7)
Damaged rubber pads must be replaced immediately.
The pad to attach should be 75 mm in diameter at maximum. The machine cannot work at the full performance if the larger pad is attached.
Insert the 17 mm wrench (15) into the notch of the spindle and fix the spindle. Turning the pad counterclockwise to remove and attach the new pad by turning clockwise.
* Make sure to tighten the pad securely, or it will become loose during the operation.

OPERATION MODE SWITCH FUNCTION (Fig.8)
Through the method listed below can switch the operating mode in 3 steps.
Select the operating mode depending on the type of work.
* Default mode when you purchase is High mode.

(Switching method)
1. You can switch the operating mode when the switch is turned on and the mode display lamp (4) is lighting up.
* The lamp will light up in the colour of the mode selected last time.
2. Push the mode switch button when the mode display lamp is lighting up, and the operating mode will switch in the below order.
* The mode display lamp lighting up for 30 sec. after turned off the switch.



ENGLISH

| Table 2 | | |
|---|---|---|
| Lamp indication | Situation | Measures |
|  | The tool is overload. | Turn off the switch and remove the battery, then remove the cause of overload. |
| | The tool and / or the battery are / is overheated. | Turn off the switch and remove the battery. |
| | The temperature inside the battery is too low. | Remove the battery from the tool and wait for the battery to go back to room temperature. *DON'T HEAT THE TOOL |
| | Low battery. | Remove the battery from the tool and recharge the battery. |
|  | The battery was inserted with the switch turned ON. | Turn the switch off and on again |
| | Some problem occurred on the battery. | Turn off the switch and replace the battery or contact Authorized Service Center. |

OPERATING
NEVER COVER AIR VENTS SINCE THEY MUST ALWAYS BE OPEN FOR PROPER MOTOR COOLING.
To operate efficiently, be careful to control the contact pressure between polish surface and the buff.

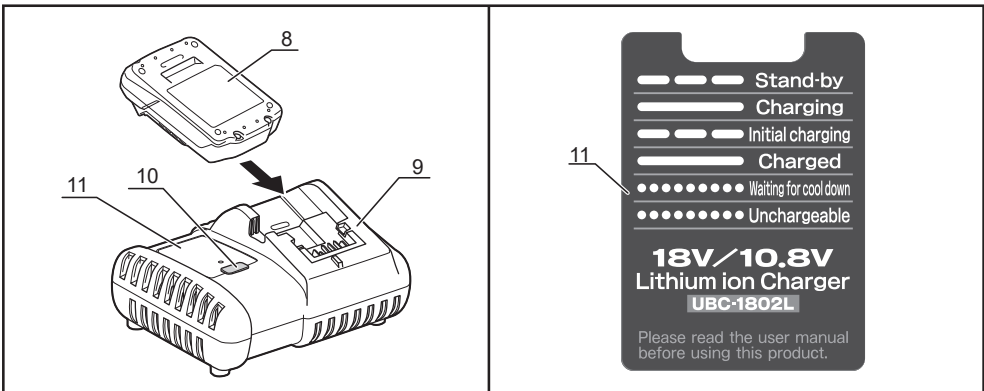
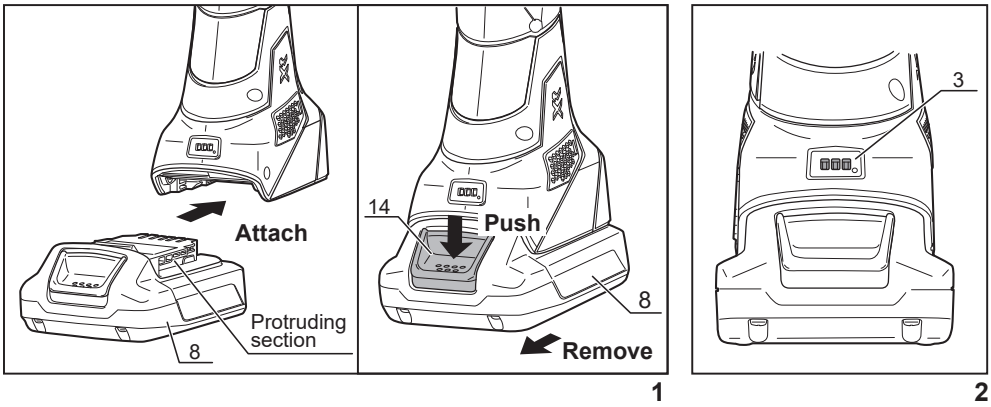
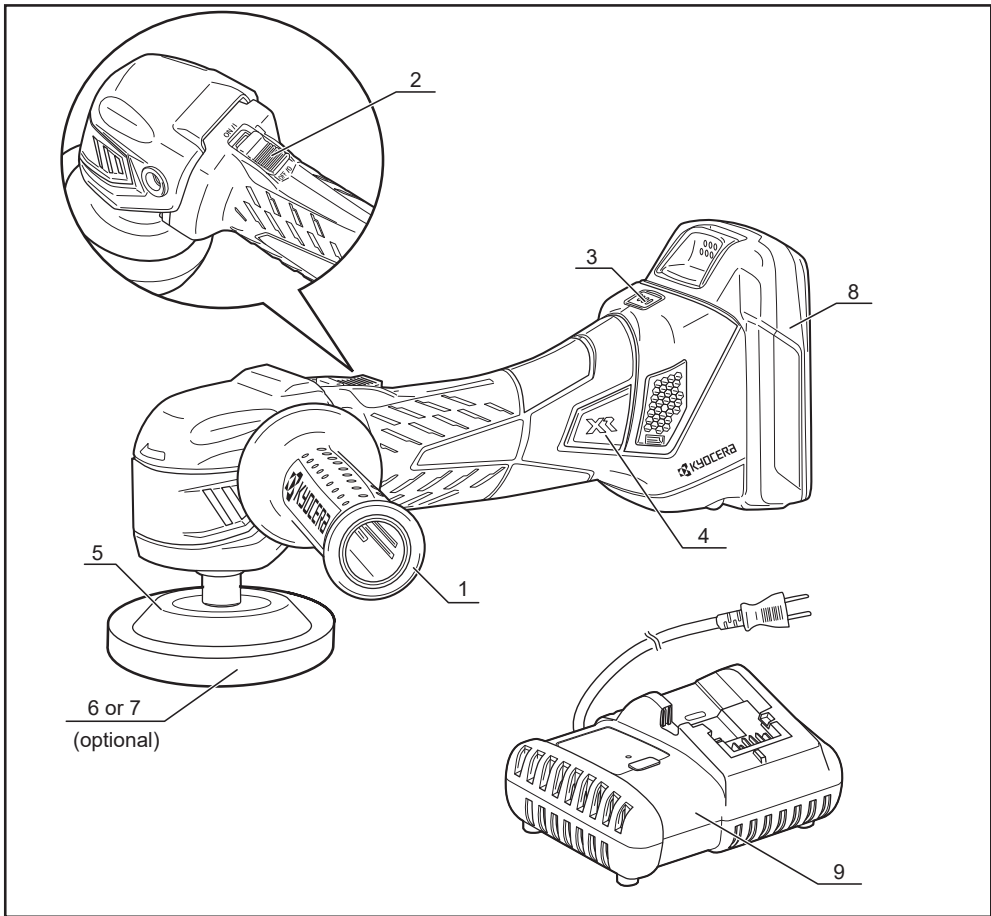
BATTERY PROTECTION (Fig.9, Table 2)
This tool has a battery protection function (circuit control).
The tool might stop working in the situation in the table above.
When the battery protection is working, the battery level indicator will flash for 30 sec. when the switch is turned ON.
Please inspect the tool and resolve the problem.

STORING THE TOOL
Store the tool in a dry place that does not get too hot. Avoid places which can be reached by children or from where the tool may fall.
Pay attention to the following when storing the battery pack for an extended period of time.
a. Store lithium ion batteries with fully charged.
b. Recharge the stored battery pack every 6 months.
c. Avoid high temperatures. Do not store for an extended period of time in places that are 45°C or hotter.
d. Do not store in places that are -20°C or colder.
e. Do not store in places that are near to heat sources or places that are subject to direct sunlight.
f. Do not store in places which have large changes in temperature and may have condensation.
g. Do not store in humid places.
h. Do not allow it come in contact with water.
i. Store in a dry place.
j. Do not subject it to large vibrations or allow it to fall when moving it.
k. In order to avoid short circuits, do not allow it come in contact with metal objects.
l. Before storing the battery pack, remove it from the charger.

MAINTENANCE
After use, check the tool to make sure that it is in top condition.
It is recommended that you take this tool to an Authorized Service Center for a thorough cleaning and lubrication at least once a year.
DO NOT MAKE ANY ADJUSTMENTS WHILE THE MOTOR IS IN MOTION.
ALWAYS REMOVE THE BATTERY FROM THE TOOL BEFORE CHANGING REMOVABLE OR EXPENDABLE PARTS (BIT...ETC.), LUBRICATING OR WORKING ON THE UNIT.

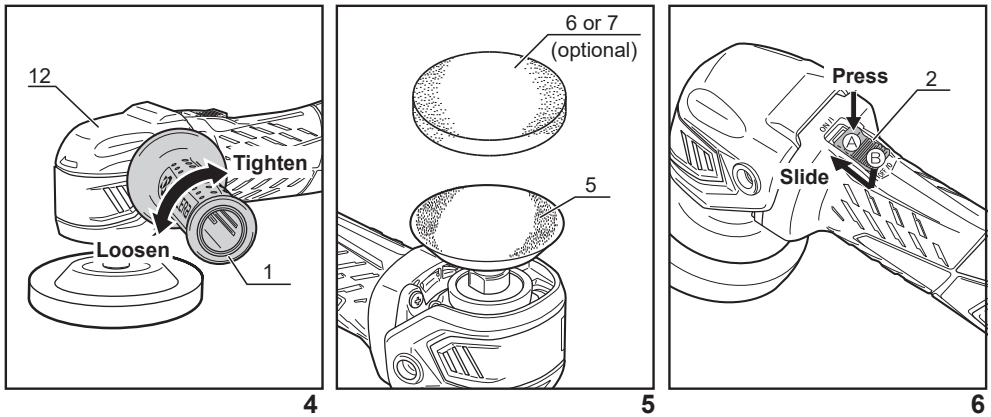
WARNING!
To ensure safety and reliability, all repairs should be performed by an AUTHORIZED SERVICE CENTER or other QUALIFIED SERVICE ORGANIZATION.
SAVE THESE INSTRUCTIONS FOR FUTURE REFERENCE.

WARNING To reduce the risk of injury, user must read instruction manual "
WARNING Always wear eye protection"



| Lamp display | | | | Table 1 |
|-----------------------|------------|-----------------------------|-----------------|--|
| Display mode | Lamp color | Flashing speed | | Meaning |
| Stand-by | Green | Flashing | — — — | The charger is plugged into the outlet. |
| Charging | Red | Solid | ———— | Charging |
| Initial charging | Red | Flashing | — — — | Initial charge to protect battery |
| Charged | Green | Solid | ———— | Charging completed |
| Waiting for cool down | Green | Fast flashing | ● ● ● ● ● ● ● ● | The battery pack is too hot for charging. • Charging will start automatically when the temperature is back to normal. |
| Unchargeable | Green, Red | Fast flashing (Alternately) | ● ● ● ● ● ● ● ● | The battery cannot be charged. • Battery is not properly attached. • Battery is damaged or at the end of its service life. |

* Initial charging mode may be displayed when charging the battery for the very first time after purchase or charging after long-term storage. It turns to charging mode automatically once initial charging is completed.



THANK YOU FOR BUYING OUR PRODUCT.
To ensure your safety and satisfaction, carefully read through this OWNER'S MANUAL before using the product.

General power tool safety warnings
⚠ **WARNING** Read all safety warnings, instructions, illustrations and specifications provided with this power tool. Failure to follow all instructions listed below may result in electric shock, fire and/or serious injury.

Save all warnings and instructions for future reference.
The term "power tool" in the warnings refers to your mains-operated (corded) power tool or battery-operated (cordless) power tool.

- 1) Work area safety**
 - a) Keep work area clean and well lit.** Cluttered or dark areas invite accidents.
 - b) Do not operate power tools in explosive atmospheres, such as in the presence of flammable liquids, gases or dust.** Power tools create sparks which may ignite the dust or fumes.
 - c) Keep children and bystanders away while operating a power tool.** Distractions can cause you to lose control.
- 2) Electrical safety**
 - a) Power tool plugs must match the outlet. Never modify the plug in any way. Do not use any adapter plugs with earthed (grounded) power tools.** Unmodified plugs and matching outlets will reduce risk of electric shock.
 - b) Avoid body contact with earthed or grounded surfaces, such as pipes, radiators, ranges and refrigerators.** There is an increased risk of electric shock if your body is earthed or grounded.
 - c) Do not expose power tools to rain or wet conditions.** Water entering a power tool will increase the risk of electric shock.
 - d) Do not abuse the cord. Never use the cord for carrying, pulling or unplugging the power tool. Keep cord away from heat, oil, sharp edges or moving parts.** Damaged or entangled cords increase the risk of electric shock.
 - e) When operating a power tool outdoors, use an extension cord suitable for outdoor use.** Use of a cord suitable for outdoor use reduces the risk of electric shock.
 - f) If operating a power tool in a damp location is unavoidable, use a residual current device (RCD) protected supply.** Use of an RCD reduces the risk of electric shock.
- 3) Personal safety**
 - a) Stay alert, watch what you are doing and use common sense when operating a power tool. Do not use a power tool while you are tired or under the influence of drugs, alcohol or medication.** A moment of inattention while operating power tools may result in serious personal injury.
 - b) Use personal protective equipment. Always wear eye protection.** Protective equipment such as a dust mask, non-skid safety shoes, hard hat or hearing protection used for appropriate conditions will reduce personal injuries.
 - c) Prevent unintentional starting. Ensure the switch is in the off-position before connecting to power source and/or battery pack, picking up or carrying the tool.** Carrying power tools with your finger on the switch or energising power tools that have the switch on invites accidents.

- d) Remove any adjusting key or wrench before turning the power tool on.** A wrench or a key left attached to a rotating part of the power tool may result in personal injury.
 - e) Do not overreach. Keep proper footing and balance at all times.** This enables better control of the power tool in unexpected situations.
 - f) Dress properly. Do not wear loose clothing or jewellery. Keep your hair and clothing away from moving parts.** Loose clothes, jewellery or long hair can be caught in moving parts.
 - g) If devices are provided for the connection of dust extraction and collection facilities, ensure these are connected and properly used.** Use of dust collection can reduce dust-related hazards.
 - h) Do not let familiarity gained from frequent use of tools allow you to become complacent and ignore tool safety principles.** A careless action can cause severe injury within a fraction of a second.
- 4) Power tool use and care**
 - a) Do not force the power tool. Use the correct power tool for your application.** The correct power tool will do the job better and safer at the rate for which it was designed.
 - b) Do not use the power tool if the switch does not turn it on and off.** Any power tool that cannot be controlled with the switch is dangerous and must be repaired.
 - c) Disconnect the plug from the power source and/or remove the battery pack, if detachable, from the power tool before making any adjustments, changing accessories, or storing power tools.** Such preventive safety measures reduce the risk of starting the power tool accidentally.
 - d) Store idle power tools out of the reach of children and do not allow persons unfamiliar with the power tool or these instructions to operate the power tool.** Power tools are dangerous in the hands of untrained users.
 - e) Maintain power tools and accessories. Check for misalignment or binding of moving parts, breakage of parts and any other condition that may affect the power tool's operation. If damaged, have the power tool repaired before use.** Many accidents are caused by poorly maintained power tools.
 - f) Keep cutting tools sharp and clean.** Properly maintained cutting tools with sharp cutting edges are less likely to bind and are easier to control.
 - g) Use the power tool, accessories and tool bits etc. in accordance with these instructions, taking into account the working conditions and the work to be performed.** Use of the power tool for operations different from those intended could result in a hazardous situation.
 - h) Keep handles and grasping surfaces dry, clean and free from oil and grease.** Slippery handles and grasping surfaces do not allow for safe handling and control of the tool in unexpected situations.

- 5) Battery tool use and care**
 - a) Recharge only with the charger specified by the manufacturer.** A charger that is suitable for one type of battery pack may create a risk of fire when used with another battery pack.
 - b) Use power tools only with specifically designated battery packs.** Use of any other battery packs may create a risk of injury and fire.
 - c) When battery pack is not in use, keep it away from other metal objects, like paper clips, coins, keys, nails, screws or other small metal objects, that can make a connection from one terminal to another.** Shorting the battery terminals together may cause burns or a fire.

- d) Under abusive conditions, liquid may be ejected from the battery; avoid contact. If contact accidentally occurs, flush with water. If liquid contacts eyes, additionally seek medical help.** Liquid ejected from the battery may cause irritation or burns.
- e) Do not use a battery pack or tool that is damaged or modified.** Damaged or modified batteries may exhibit unpredictable behaviour resulting in fire, explosion or risk of injury.
- f) Do not expose a battery pack or tool to fire or excessive temperature.** Exposure to fire or temperature above 130 °C may cause explosion.
- g) Follow all charging instructions and do not charge the battery pack or tool outside the temperature range specified in the instructions.** Charging improperly or at temperatures outside the specified range may damage the battery and increase the risk of fire.

- 6) Service**
 - a) Have your power tool serviced by a qualified repair person using only identical replacement parts.** This will ensure that the safety of the power tool is maintained.
 - b) Never service damaged battery packs.** Service of battery packs should only be performed by the manufacturer or authorized service providers.

CORDLESS SANDER POLISHER SAFETY PRECAUTIONS

1. Do not wet the polishing surface since this may cause electric shocks.

INSTRUCTIONS FOR SAFE HANDLING

1. Make sure that the tool is only connected to the voltage marked on the name plate.
2. Never use the tool if its cover or any bolts are missing. If the cover or bolts have been removed, replace them prior to use. Maintain all parts in good working order.
3. Never touch the blade, drill bit, grinding wheel or other moving parts during use.
4. Never start a tool when its rotating component is in contact with the workpiece.
5. Never lay a tool down before its moving parts have come to a complete stop.
6. Check that the work piece is properly supported.
7. Ensure that ventilation openings are kept clear when working in dusty conditions. If it should become necessary to clear dust, first disconnect the tool from the mains supply (use nonmetallic objects) and avoid damaging internal parts.
8. **ACCESSORIES :** The use of accessories or attachments other than those recommended in these instructions might present a hazard.
9. **REPLACEMENT PARTS :** When servicing use only identical replacement parts.

DISPOSAL OF THE EXHAUSTED BATTERY
Li-ion batteries must be recycled.
Take the battery to the shop from which it was purchased as soon as battery life becomes too short for practical use.
Do not discard the exhausted battery.

DESCRIPTION

- | | |
|---|-------------------|
| 1. Auxiliary handle | 9. Charger |
| 2. Switch | 10. Charger lamp |
| 3. Battery level indicator | 11. Label |
| 4. Mode switch button / Mode display lamp | |
| 5. Rubber pad (Velcro type) | 12. Gear case |
| 6. Sponge buff (optional) | 13. Spindle |
| 7. Wool buff (optional) | 14. Push button |
| 8. Battery pack | 15. Wrench (17mm) |

SPECIFICATIONS

| | |
|---------------|---|
| Pad size | 75 mm |
| Buff size | 80 mm |
| No load speed | (High) 2,500 min ⁻¹ (Middle) 2,000 min ⁻¹ (Low) 1,600 min ⁻¹ |
| Voltage | DC 18V (Li-ion) |
| Battery type | B-1815LA (1,500mAh) |
| Charger type | UBC-1802L |
| Charging time | Approx. 25 min |
| Dimension | 300×79×143 mm |
| Weight | 1.7 kg (with 1,500mAh battery pack) |

STANDARD ACCESSORIES

Wrench 17mm, Auxiliary handle, Charger, Battery pack (1,500mAh)

APPLICATIONS

(Use only for the purposes listed below.)
1. Polishing the surface of automobiles.

REMOVING AND ATTACHING THE BATTERY PACK(Fig. 1)

(Attachment)
Align the protruding section of the battery pack (8) with the groove on the body, and slide the battery pack all the way into the groove in the direction of the arrow to attach securely.

(Removal)
Push and hold the push button (14) while pulling the battery pack (8) straight out in the direction of the arrow.

CHECKING THE BATTERY LEVEL(Fig. 2)

The battery level indicator (3) will light up or flash for a while when turn on the switch (2).

The battery level can be determined by the indicator state. Indicator display details are as follows.

| Display | Battery condition |
|------------------|-----------------------|
| ■ ■ ■ 3 lit | Battery fully charged |
| ■ ■ □ 2 lit | Battery half charged |
| ■ □ □ 1 lit | Charge soon |
| ⚡ □ □ 1 flashing | Charge immediately |

CHARGING

The battery pack (8) must be charged before you use the tool.

The batteries are affected by temperature, so do not charge them outside or in a location exposed to direct sunlight. Doing so will shorten the charging time and result in less than the full charge.