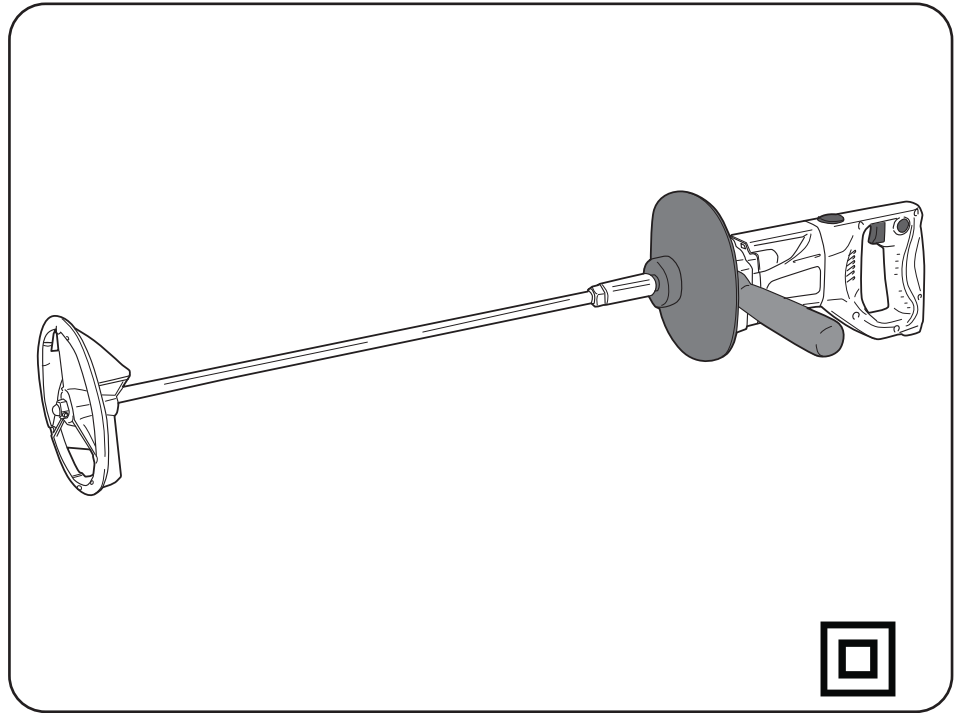


APMT1362

GB OWNER'S OPERATING MANUAL

中文 操作说明书



69800911-00 STD(C)
05-21

KYOCERA Industrial Tools Corporation
2-2-54 Matsuhama-cho, Fukuyama-shi,
Hiroshima-ken, 720-0802 Japan

中文 简体

感谢您购买我们的产品

为确保您安全满意地使用产品，请在使用前认真阅读本用户指南。

电动工具一般安全警告

⚠ **警告** 请阅读此电动工具附带的所有安全警告、操作说明、插图和产品规格。

若不遵循下列所有说明可能导致电击、火灾和 / 或者严重伤害。

保存所有警告和说明以备将来使用。

所有警告中使用的术语“电动工具”是指电源供电（有线）的电动工具或者电池供电（无线）电动工具。

1) 工作区域安全

- a) 保持工作区域干净和良好的照明。混乱或黑暗的场地会引发事故。
- b) 不要在容易引起爆炸的空间，如存在易燃液体、气体、或粉尘的地方操作电动工具，电动工具产生的火花会引燃粉尘或气体。
- c) 操作电动工具时，应让儿童和旁观者走开。注意力分散会让您失去控制。

2) 用电安全

- a) 电动工具插头必须与插座相配。切勿对插头作任何改动。对于接地的电动工具请勿使用任何分接插头。原装的插头和合适的插座将减少电击的危险。
- b) 避免身体接触到接地的管道、散热装置、炉灶、冰箱等物体表面，以免增大电击的危险
- c) 勿将电动工具暴露于雨水或潮湿的环境下。电动工具进水将使电击危险增大。
- d) 不要滥用电源导线。切勿用电源导线吊持、牵拉工具或拉扯导线以拔掉插头切断电源。保持电源导线离开热源、油类或运动部件。损坏或纠缠的导线会增大电击的危险。
- e) 在户外使用电动工具时，必须使用户外专用延长线。使用正确的延长线可减低触电的危险。
- f) 如果不得不在潮湿的环境中使用电动工具，必须使用漏断路器（RCD）保护的电源。使用 RCD 能够减少电击的危险。

3) 个人安全

- a) 保持警惕。在操作电动工具时应时刻保持警觉并运用常识。在感到疲倦或吸食毒品及服用酒精饮料或药物后，切勿使用电动工具。一时的疏忽可能会导致严重的个人伤害。
- b) 使用人身防护工具。佩带护眼用具。应恰当地使用人身防护工具，如防尘面具、防滑鞋、头盔或听觉保护器等以降低人身伤害几率。
- c) 避免工具无意启动。在插头接入电源和 / 或电池组，拿起或搬运工具之前应确保开关在关闭位置。在搬运电动工具时将手指放在开关上或开关处于启动状态时激活电动工具，都会增加事故发生的危险。
- d) 启动电动工具前拔掉调试钥匙、拿开扳钳。电动工具转动时，未拔下的调试钥匙或扳钳会造成人身伤害。
- e) 操作时身体不要过于前倾，应脚下站稳并随时保持平衡，这有利于在非正常情况下拿稳电动工具。
- f) 穿着合适的工作服。勿穿着宽松的衣服和佩带首饰。勿使头发和衣物接近电动工具转动的部件。松垮的衣服、首饰或长头发有可能被绞进转动的机器里。
- g) 如有需要，请务必正确接好滤尘和收集设备。使用灰尘收集设备以便减少灰尘造成的危险。

- h) 不要让频繁使用工具所带来的熟悉感让你变得自满，忽视工具安全原则。粗心大意的行为会在一瞬间造成严重的伤害。

4) 工具的使用和保养。

- a) 使用正确的电动工具，勿强行使用不正确的工具。使用正确的工具能更好、更安全地把工作做好。
- b) 勿使用开关不灵的工具。不能使用开关控制的电动工具是危险的，应马上修理。
- c) 调试机器、更换部件或搁置工具前，务必切断电源和 / 或从电动工具上取下电池组（如果可拆卸）。这些安全防护措施可减少意外触电的风险。
- d) 将不用的电动工具放在小孩触摸不到的地方，勿让不熟悉工具使用方法的人进行操作。电动工具在未经训练的生人手里是危险的。
- e) 电动工具和部件的保养。检查零部件，检查转动部件是否错误连接，零件是否破损及是否会影响工具的使用，如工具发生损坏，立即进行修理。很多事故都是由于对工具保养不善造成的。
- f) 保持切割工具的锋利和清洁。恰当保养切割工具，使其锋利的刀刃不卷边并易操作。
- g) 按照使用说明正确使用电动工具、零配件及其刀头等，并充分考虑工作条件和既定任务。滥用工具易酿成危险。
- h) 保持手柄和抓面干燥、清洁、无油脂。滑动手柄和抓面不保证在意外情况下安全地操作和控制工具。

5) 服务

- a) 选用合格的修理人员对工具进行维修并更换相同的零部件，以保证工具的安全性。

强力搅拌器的安全警告

- a) 请按照使用说明书，用双手保持手柄。失去控制的话，有可能导致人身事故。
- b) 搅拌可燃物时必须充分通风。电动工具产生的火花在吸入可燃性气体后会起火。
- c) 请勿混合食品。电动工具及其附属品不是为加工食品而设计的。
- d) 请将导线远离作业区域。搅拌叶片和导线有可能会缠绕在一起。
- e) 确认混合容器是否放置在坚固安全的位置。如果容器没有适当固定，则可能会意外移动。
- f) 请注意不要让液体飞溅到电动工具的机罩上。浸入的液体可能会导致电动工具损坏或触电。
- g) 遵循要混合的材料的指示和警告。混合的物质可能是有害的。
- h) 电动工具掉落到搅拌材料上时，请立即拔出工具插头，让有资格的修理人员检查电动工具。如果触摸装有工具的铁桶，可能会触电。
- i) 搅拌过程中，请勿将手或将其他东西放入搅拌容器中。碰到搅拌叶片的话，可能会造成重大的人身事故。
- j) 请只在搅拌容器内启动工具运行。搅拌叶片可能产生可控制的弯曲和旋转。
- k) 应确保接头和转轴的安装牢固。接头和转轴若安装不当是非常危险的，因为它们可能会在搅拌中飞出或断裂。
- l) 勿穿戴袖筒或领带，因为它们可能会缠绕在旋转的搅拌器中。

安全操作规程

- 弄清楚工具铭牌上标明的使用电压。
- 如果工具的护罩和螺丝缺损，切勿冒失使用；如果护罩的位置有变动，要将护罩移到原位才能使用；保养好所有的零件，使之处于良好的工作状态。
- 使用时不要触摸砂轮及其他转动的零件。
- 转动的部件与工作接触时，不要起动工具。
- 当转动的部件未完全停止起，不要放下工具。
- 附件使用：使用指定以外的附件和配件，可能发生危险。
- 零件的更换：仅限于换原生产厂相同型号的零件。

各部件名称

- 防尘盖
- 速度转换旋钮
- 辅助把手
- 扳机
- 锁定钮
- 搅拌叶片 (135mm)
- 六角螺栓 M6X18
- 转轴
- 叶片螺栓 (32mm)
- 接头
- 心轴
- 六角螺栓 M10X15
- 双头扳手 (17×19mm)
- 双头扳手 (10×13mm)

规格说明

输入	780 W
空载速度	低速 600 min ⁻¹
	高速 1,300 min ⁻¹
搅拌叶片直径	135 mm
总体长度	880 mm
净重	3.0 kg

标准附件

防尘盖, 转轴, 搅拌叶片 (135mm), 叶片螺栓, 双头扳手, 接头, 辅助把手, 六角螺栓

开关 (图 1)

该工具是靠扣住和松开扳机 (4) 来启动和停止的。想要连续操作时, 请在扣住扳机中, 按锁定钮 (5)。再按该按钮, 可解除锁定。

速度转换 (图 2)

速度调整只能在工具停止状态下进行。速度转换旋钮 (2) 设置于罩的底部。旋钮旋至“H”获得高转速，旋至“L”位置获得低转速。如果旋钮不能转动，手动扭动转轴直到齿轮啮合，以使旋钮能正常转换。

安装防尘盖 (图 3、4)

插入防尘盖 (1) 至齿轮箱，通过辅助把手 (3) 和六角螺栓 (12) 定位。

连接辅助把手 (图 4)

使用该工具时，请将辅助把手 (3) 连接在齿轮箱侧面的螺钉孔中。

安装搅拌叶片 (图 5 - 8)

- 通过螺纹连接接头 (10) 和心轴 (11)，并用扳手拧紧。用双头扳手 (13) 保持心轴固定不转动, 用双头扳手 (13) 拧紧接头。(图 6)
注意：轴端螺栓直径和接头直径不同。调节 (扳手) 牙距使之与接头相符，然后紧固。
- 通过螺纹连接转轴 (8) 至接头 (10)，并用扳手拧紧。用双头扳手 (13) 保持心轴固定不动，用双头扳手 (13) 夹住转轴的六角部位紧固。(图 7)
- 连接搅拌叶片 (6) 至转轴 (8)。(图 8)
- 把叶片螺栓 (9) 旋入转轴端螺孔，并用扳手拧紧。用双头扳手 (13) 保持心轴固定不转动，用另一把双头扳手 (14) 旋转叶片螺栓的六角螺母紧固。(图 8)
- 定位转轴 (8) 末端的搅拌叶片 (6)。确保六角螺栓 (7) 在转轴的倒角侧。用双头扳手 (14) 拧紧六角螺栓使搅拌叶片定位。(图 8)
- 拆卸搅拌叶片，按照上述描述的反顺序操作。

操作

搅拌时，要用双手握住把手和辅助把手。将搅拌叶片放入材料后，再打开电源。关闭电源，需等待搅拌叶片停止后，才能将其从材料中取出。

维修保养

使用后检查工具确实仍处于良好状态，建议每年至少到规定的维修中心清洁和加油一次。
当马达运转时，切勿作任何调整。
在需要更换损坏的零件（外片砂轮等）和在工具的工作部分加油以前，要把电源线插头从插座上拔下。

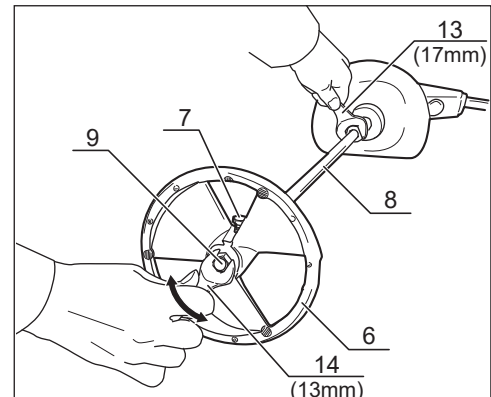
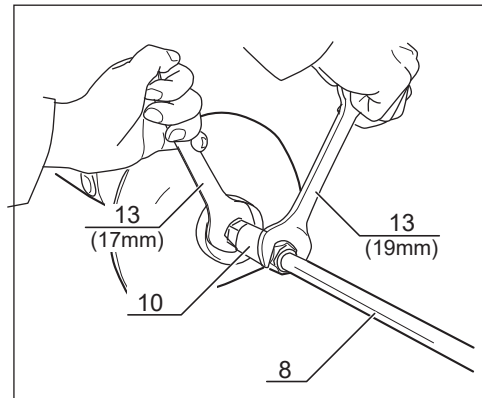
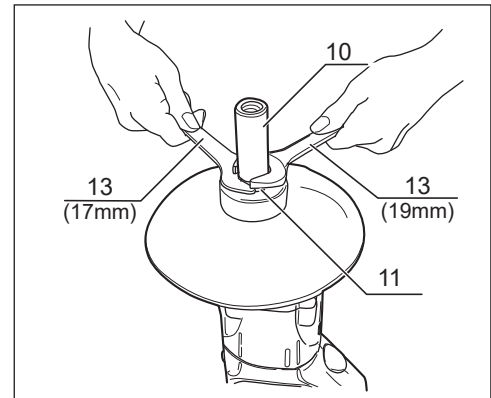
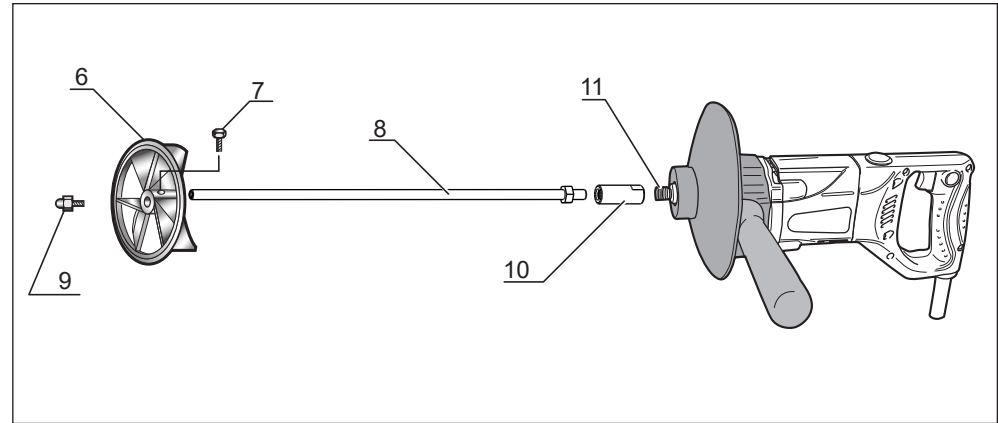
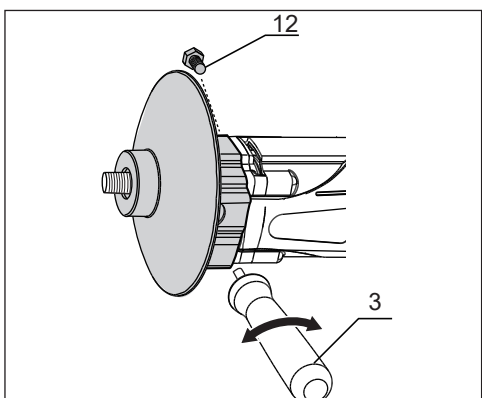
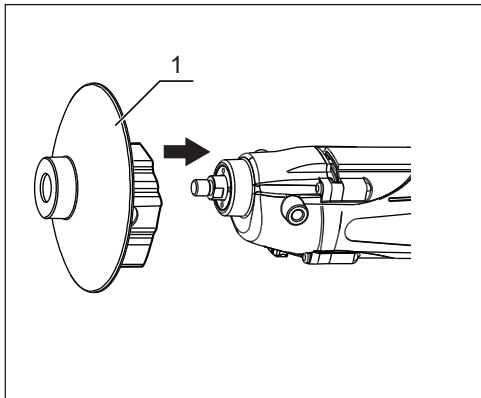
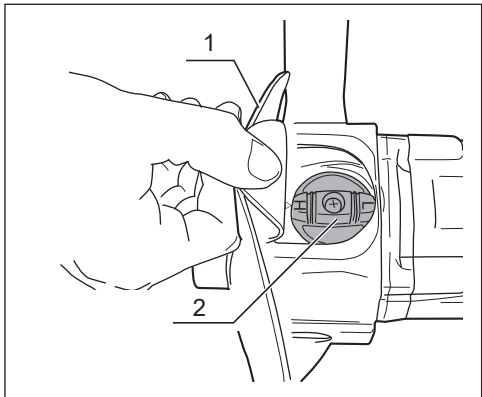
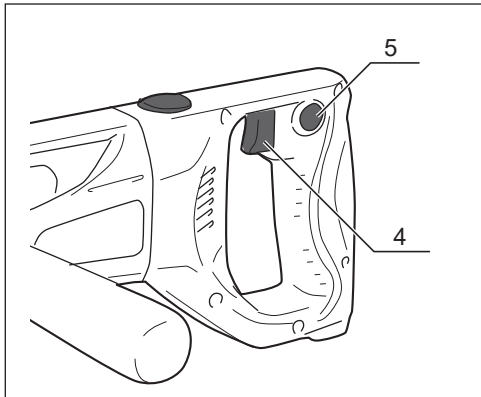
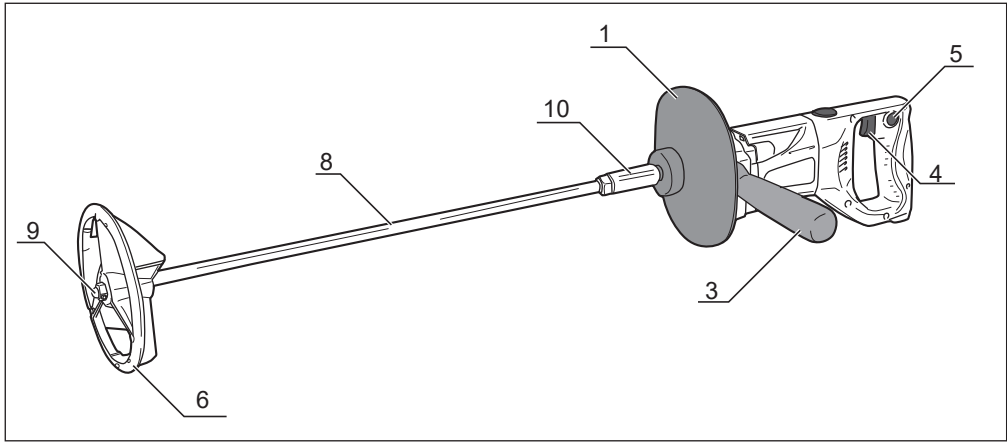
警告！

要确保安全和使用的可靠性，全部的修理工作，要到指定的维修服务中心或质量可信的修理部进行。

请将本使用说明书妥为保存，以备需要时参考。

⚠ **警告：**为了减少受伤的风险，请务必阅读操作手册。

□ **保护等级 II。**具有不只依赖于基本绝缘，但依赖于双重或强化绝缘等保护措施电击保护的电动工具。”



THANK YOU FOR BUYING OUR PRODUCT.

To ensure your safety and satisfaction, carefully read through this OWNER'S MANUAL before using the product.

General power tool safety warnings

⚠ WARNING Read all safety warnings, instructions, illustrations and specifications provided with this power tool. Failure to follow all instructions listed below may result in electric shock, fire and/or serious injury.

Save all warnings and instructions for future reference. The term "power tool" in the warnings refers to your mains-operated (corded) power tool or battery-operated (cordless) power tool.

- 1) **Work area safety**
 - a) **Keep work area clean and well lit.** Cluttered or dark areas invite accidents.
 - b) **Do not operate power tools in explosive atmospheres, such as in the presence of flammable liquids, gases or dust.** Power tools create sparks which may ignite the dust or fumes.
 - c) **Keep children and bystanders away while operating a power tool.** Distractions can cause you to lose control.

- 2) **Electrical safety**
 - a) **Power tool plugs must match the outlet. Never modify the plug in any way. Do not use any adapter plugs with earthed (grounded) power tools.** Unmodified plugs and matching outlets will reduce risk of electric shock.
 - b) **Avoid body contact with earthed or grounded surfaces, such as pipes, radiators, ranges and refrigerators.** There is an increased risk of electric shock if your body is earthed or grounded.
 - c) **Do not expose power tools to rain or wet conditions.** Water entering a power tool will increase the risk of electric shock.
 - d) **Do not abuse the cord. Never use the cord for carrying, pulling or unplugging the power tool. Keep cord away from heat, oil, sharp edges or moving parts.** Damaged or entangled cords increase the risk of electric shock.
 - e) **When operating a power tool outdoors, use an extension cord suitable for outdoor use.** Use of a cord suitable for outdoor use reduces the risk of electric shock.
 - f) **If operating a power tool in a damp location is unavoidable, use a residual current device (RCD) protected supply.** Use of an RCD reduces the risk of electric shock.

- 3) **Personal safety**
 - a) **Stay alert, watch what you are doing and use common sense when operating a power tool. Do not use a power tool while you are tired or under the influence of drugs, alcohol or medication.** A moment of inattention while operating power tools may result in serious personal injury.
 - b) **Use personal protective equipment. Always wear eye protection.** Protective equipment such as a dust mask, non-skid safety shoes, hard hat or hearing protection used for appropriate conditions will reduce personal injuries.
 - c) **Prevent unintentional starting. Ensure the switch is in the off-position before connecting to power source and/or battery pack, picking up or carrying the tool. Carrying power tools with your finger on the switch or energising power tools that have the switch on invites accidents.**
 - d) **Remove any adjusting key or wrench before turning the power tool on. A wrench or a key left attached to a rotating part of the power tool may result in personal injury.**

- e) **Do not overreach. Keep proper footing and balance at all times.** This enables better control of the power tool in unexpected situations.
- f) **Dress properly. Do not wear loose clothing or jewelry. Keep your hair and clothing away from moving parts.** Loose clothes, jewellery or long hair can be caught in moving parts.
- g) **If devices are provided for the connection of dust extraction and collection facilities, ensure these are connected and properly used.** Use of dust collection can reduce dust-related hazards.
- h) **Do not let familiarity gained from frequent use of tools allow you to become complacent and ignore tool safety principles.** A careless action can cause severe injury within a fraction of a second.

- 4) **Power tool use and care**
 - a) **Do not force the power tool. Use the correct power tool for your application.** The correct power tool will do the job better and safer at the rate for which it was designed.
 - b) **Do not use the power tool if the switch does not turn it on and off.** Any power tool that cannot be controlled with the switch is dangerous and must be repaired.
 - c) **Disconnect the plug from the power source and/or remove the battery pack, if detachable, from the power tool before making any adjustments, changing accessories, or storing power tools.** Such preventive safety measures reduce the risk of starting the power tool accidentally.
 - d) **Store idle power tools out of the reach of children and do not allow persons unfamiliar with the power tool or these instructions to operate the power tool.** Power tools are dangerous in the hands of untrained users.
 - e) **Maintain power tools and accessories. Check for misalignment or binding of moving parts, breakage of parts and any other condition that may affect the power tool's operation. If damaged, have the power tool repaired before use.** Many accidents are caused by poorly maintained power tools.
 - f) **Keep cutting tools sharp and clean.** Properly maintained cutting tools with sharp cutting edges are less likely to bind and are easier to control.
 - g) **Use the power tool, accessories and tool bits etc. in accordance with these instructions, taking into account the working conditions and the work to be performed.** Use of the power tool for operations different from those intended could result in a hazardous situation.
 - h) **Keep handles and grasping surfaces dry, clean and free from oil and grease.** Slippery handles and grasping surfaces do not allow for safe handling and control of the tool in unexpected situations.

- 5) **Service**
 - a) **Have your power tool serviced by a qualified repair person using only identical replacement parts.** This will ensure that the safety of the power tool is maintained.

Power mixer safety warnings

- a) **Hold the tool with both hands at the intended handles.** Loss of control can cause personal injury.
- b) **Ensure sufficient ventilation when mixing flammable materials to avoid a hazardous atmosphere.** Developing vapour may be inhaled or be ignited by the sparks the power tool produces.
- c) **Do not mix food.** Power tools and their accessories are not designed for processing food.
- d) **Keep the cord away from the working area.** The cord may be entangled by the mixing fan.
- e) **Ensure that the mixing container is placed in a firm and secure position.** A container that is not properly secured may move unexpectedly.
- f) **Ensure that no liquid splashes against the housing of the power tool.** Liquid that has penetrated the power tool can cause damage and lead to electric shock.

- 1 -

- g) **Follow the instructions and warnings for the material to be mixed.** Material to be mixed may be harmful.
- h) **If the power tool falls into the material to be mixed, unplug the tool immediately and have the power tool checked by a qualified repair person.** Reaching into the bucket with the tool still plugged in can lead to electric shock.
- i) **Do not reach into the mixing container with your hands or insert any other objects into it while mixing.** Contact with the mixing fan may lead to serious personal injury.
- j) **Start up and run down the tool in the mixing container only.** The mixing fan may bend or spin in an uncontrolled manner.
- k) **Make sure that the joint and shaft are securely mounted.** An improperly mounted joint and shaft are extremely dangerous since they may fly off or break during mixing.
- l) **Do not wear cloth gloves or a necktie since they could become caught by the rotating mixer.**

INSTRUCTIONS FOR SAFE HANDLING

1. Make sure that the tool is only connected to the voltage marked on the name plate.
2. Never use the tool if its cover or any bolts are missing. If the cover or bolts have been removed, replace them prior to use. Maintain all parts in good working order.
3. Never touch the blade, drill bit, grinding wheel or other moving parts during use.
4. Never start a tool when its rotating component is in contact with the workpiece.
5. Never lay a tool down before its moving parts have come to a complete stop.
6. **ACCESSORIES** : The use of accessories or attachments other than those recommended in these instructions might present a hazard.
7. **REPLACEMENT PARTS** : When servicing, use only identical replacement parts.

DESCRIPTION

- | | |
|------------------------------------|-----------------------|
| 1. Dust cover | 2. Speed change knob |
| 3. Aux. handle | 4. Switch |
| 5. Lock button | 6. Mixing fan (135mm) |
| 7. Hex. head bolt (M6X18) | 8. Shaft |
| 9. Clamp screw (32mm) | 10. Joint |
| 11. Spindle | |
| 12. Hex. head bolt (M10X15) | |
| 13. Double ended wrench (17X19 mm) | |
| 14. Double ended wrench (10X13 mm) | |

SPECIFICATIONS

Input	780 W
No load speed	low 600 min ⁻¹
	high 1,300 min ⁻¹
Mixing fan diameter	135 mm
Overall length	880 mm
Net weight	3.0 kg

STANDARD ACCESSORIES

Dust cover, Shaft, Mixing fan, Clamp screw, Double ended wrenches, Joint, Aux. Handle, Hex. head bolts

SWITCH (Fig. 1)

This tool is started and stopped by depressing and releasing the switch (4). For continuous operation, press the lock button (5) while switch is depressed. Depress again to release the lock.

CHANGING SPEEDS (Fig. 2)

The gear can only be changed when the tool is at a standstill. A speed change knob (2) has been provided on the bottom side of the housing. Shift the knob to the "H" for high speed and to the "L" for low speed. If the knob does not move, turn the shaft by hand until the gear engages and the knob can be shifted.

MOUNTING THE DUST COVER (Figs. 3, 4)

Insert the dust cover (1) into the gear case, fixing it in place with the aux. handle (3) and hex. head bolt (12).

ATTACH THE AUX. HANDLE (Fig. 4)

When using the tool, attach the aux. handle (3) to the screw holes in the side of the gear case.

MOUNTING THE MIXING FAN (Figs. 5 - 8)

1. Screw the joint (10) into the spindle (11) and tighten it with a wrench. Hold the spindle in place with the double ended wrench (13) and tighten the joint with the double ended wrench (13). (Fig.6)
- Note:** The screw diameters on the shaft side and the main body side of the joint are different. Match the side of the joint with the notch to the main body and then mount it.
2. Screw the shaft (8) into the joint (10) and tighten it with a wrench. Hold the spindle in place with the double ended wrench (13) and tighten the hexagonal part of the shaft with the double ended wrench (13). (Fig.7)
3. Connect the mixing fan (6) to the shaft (8). (Fig.8)
4. Screw the clamp screw (9) into the end of the shaft, and tighten it with a wrench. Hold the spindle in place with the double ended wrench (13) and tighten the hexagonal part of the clamp screw with the double ended wrench (14). (Fig.8)
5. Adjust the position of the mixing fan (6) so that the hex. head bolt (7) is on the chamfered side of the shaft. Tighten the hex. head bolt with the double ended wrench (14) and fix it in place. (Fig.8)
6. To remove the mixing fan, follow the above instructions in reverse order.

OPERATING

Use both hands to hold the handle and aux. handle when mixing. Turn the power on after putting the mixing fan in the material. Turn the power off and wait for the mixing fan to stop before removing it from the material.

MAINTENANCE

After use, check the tool to make sure that it is in top condition. It is recommended that you take this tool to an Authorized Service Center for a thorough cleaning and lubrication at least once a year.

DO NOT MAKE ANY ADJUSTMENTS WHILE THE MOTOR IS IN MOTION.

ALWAYS DISCONNECT THE POWER CORD FROM THE RECEPTACLE BEFORE CHANGING REMOVABLE OR EXPENDABLE PARTS (BLADE, BIT, SANDING PAPER, ETC.), LUBRICATING OR WORKING ON THE UNIT.

WARNING

To ensure safety and reliability, all repairs should be performed by an AUTHORIZED SERVICE CENTER or other QUALIFIED SERVICE ORGANIZATION.

SAVE THESE INSTRUCTIONS FOR FUTURE REFERENCE.

⚠ WARNING To reduce the risk of injury, user must read instruction manual

⚠ Class II construction tool in which protection against electric shock does not rely on basic insulation only, but in which additional safety precaution, such as double insulation or reinforced insulation, are provided."